

WELCOME TO FUNKYTOWN

BERLIN

THE NEXT EPISODE

FUNKYTOWN

A Project by

TROCKLAND

THE NEW KIEZ ON THE BLOCK



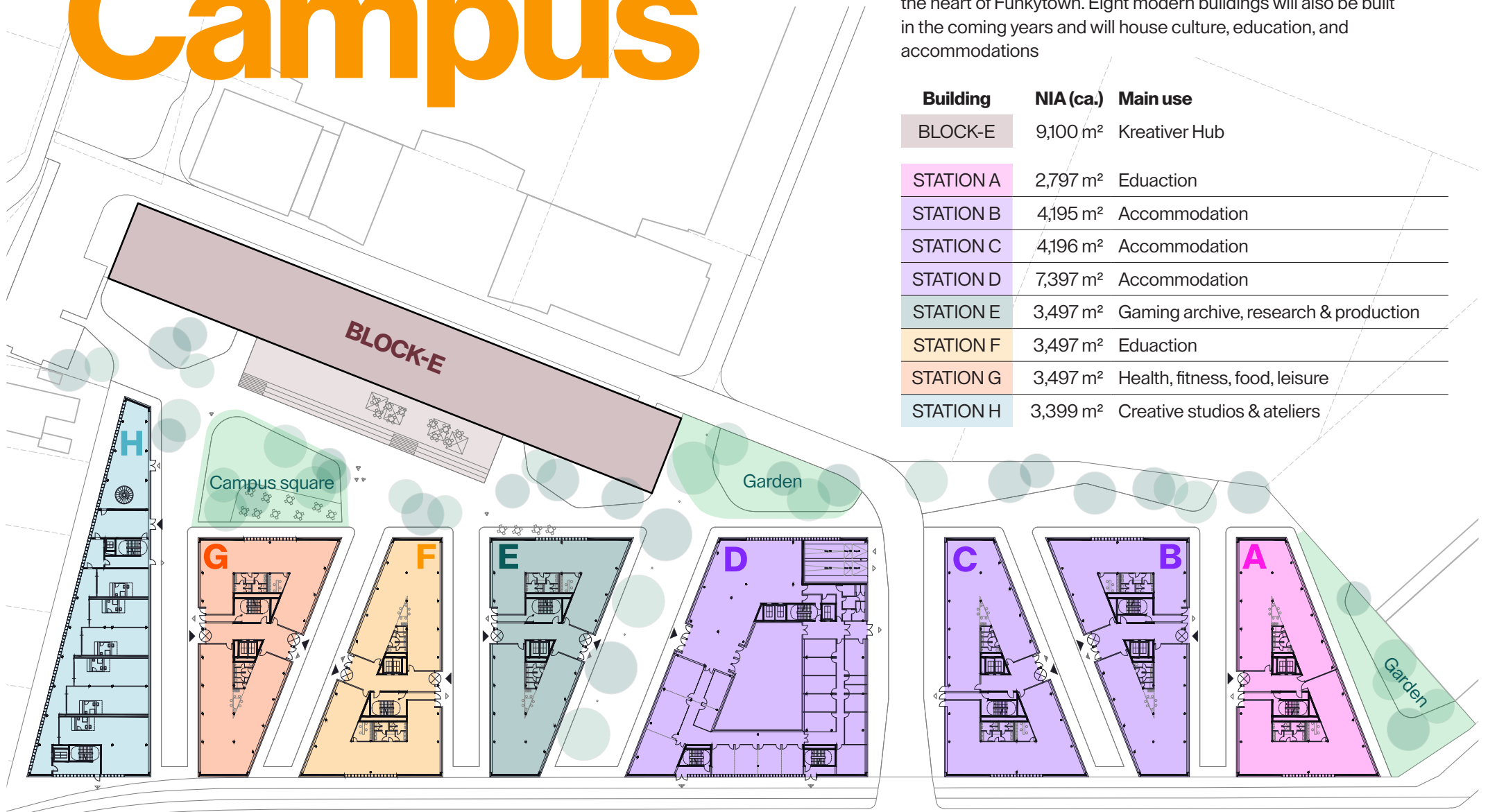


Welcome to Funkytown

◆ The new creative quarter, offering a view of the Spree River, Plänterwald, and of the neighboring Funkhaus in Nalepastrasse, as well as the city skyline, represents the revitalization of a legendary location: From the BLOCK-E on Rummelsburger Landstrasse the GDR youth radio station DT64, among others, broadcast culture and hits, debates and art into the households of an entire generation.

BLOCK-E: Ready for the next episode

Campus



BLOCK E – a place with memories and emotions. It will remain the heart of Funkytown. Eight modern buildings will also be built in the coming years and will house culture, education, and accommodations

Building	NIA (ca.)	Main use
BLOCK-E	9,100 m ²	Kreativer Hub
STATION A	2,797 m ²	Eduaction
STATION B	4,195 m ²	Accommodation
STATION C	4,196 m ²	Accommodation
STATION D	7,397 m ²	Accommodation
STATION E	3,497 m ²	Gaming archive, research & production
STATION F	3,497 m ²	Eduaction
STATION G	3,497 m ²	Health, fitness, food, leisure
STATION H	3,399 m ²	Creative studios & ateliers

Operated by
NYX by Leonardo Hotels

Operated by
nena Hospitality

Operated by
The Base



KEY

- Funkytown | Existing & new
- Existing | Art, culture, commercial
- Planned | Office, commercial

Spree Coast

◆ The immediate neighborhood of Funkytown will undergo far-reaching changes in the coming years: As part of the cross-district “Spree Coast” development project, the importance of the areas along the banks of the Spree River between Rummelsburg and Oberschönevide, which are valuable in terms of urban development, has been recognized. The construction development of this approximately 30-hectare area is driven by the Lichtenberg district office, the Treptow-Köpenick district office and the Senate Department for Urban Development, Construction and Housing.

I Follow Rivers

SURROUNDINGS

◆ For half a century, the Funkhaus has provided a space for culture, music, and creative work. The urban energy is balanced by the Spree and the island of Bullenbruch, whose deciduous trees extend all the way down to the water. The Funkytown name represents new beginnings, rhythm, and radio history as well as people, change, and city life.



Funkhaus Spree romance: magical mix for creative minds



BLOCK-E at broadcasting times



Depeche Mode concert at Funkhaus Nalepastraße
funkhaus-berlin.net



Exhibition at Reinbeckhallen, © Thorsten Wulff
stiftung-reinbeckhallen.de



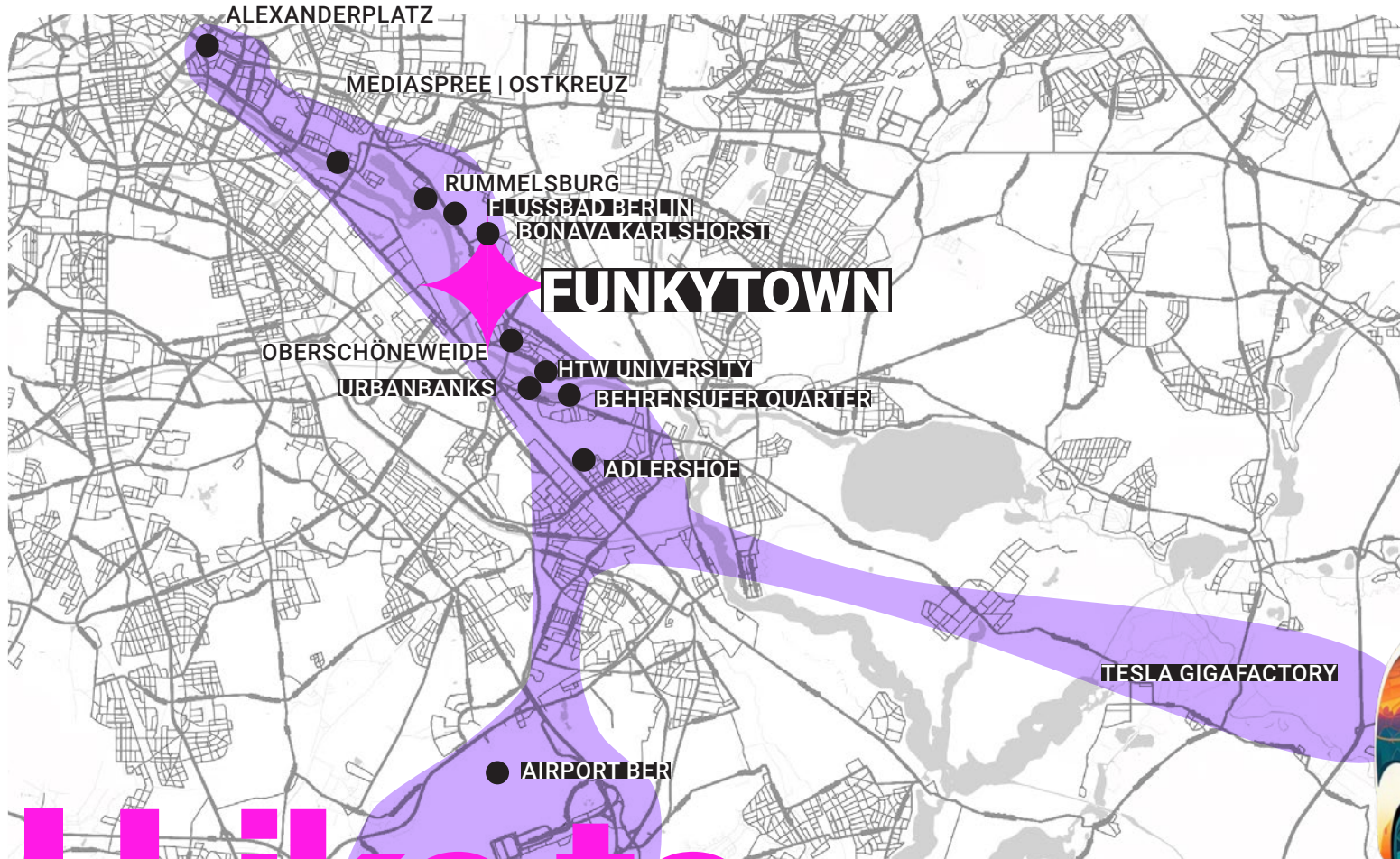
Event Space g.ART.n at Gaswerksiedlung, © Anna Bresoli
gaswerk-music-days.de/gaswerksiedlung

THE FUTURE IS IN THE AIR

◆ There are neighborhoods whose development is particularly strongly influenced by creative minds and companies. The area around Funkytown has been undergoing such a transformation for several years: Funkhaus Berlin successfully attracts people from all over the world with its concerts and events. The Gaswerksiedlung has provided a home for numerous musicians, sound engineers, and artists since 2018. Stiftung Reinbeckhallen, founded in 2016, presents exhibitions of contemporary art, accompanied by a varied program. Since 2023, the Flussbad has been a place for culture and ideas with event and exhibition spaces, guest rooms, restaurants, and lofts for creative work.



Workspace at Flussbad, © Andreas Weichsner
flussbad.com



MOBILITY

- S-Bahn stations Ostkreuz, Rummelsburg, Baumschulenweg
- Tram 21, Ferry F11
- BVG Muva
- Share Cars, Bikes, Scooters
- Private campus shuttle with electric bus (all-day schedule)

Planned: Ferry boat, water cab



I Like to Move It

◆ There will be a private campus shuttle for all tenants and guests, linking Funkytown to the Ostkreuz and Ostbahnhof train stations between 7:30 a.m. and 9 p.m. Numerous train and bus lines run from these public transport hubs throughout Berlin

and into Brandenburg. In addition, the on-demand BVG service Muva is available in the Treptow-Köpenick district. It is also possible to travel to the quarter individually at any time using share cars, scooters or bikes.

◆ The story of BLOCK-E is fascinating, starting in the 1960s when it was constructed as a way to make more space for broadcasting and production rooms for several East German radio stations. In May of 1964, the German Youth Rally broadcast continuously for 99 hours straight, securing its cult status and establishing itself as the voice of East Germany's youth overnight. What was later known as DT64 became a symbol of East German identification. The youth radio station referred to itself as the "Power of the Eastside" – and thus a movement was born. Until the wall came down, shows like Hitglobus, Mischmasch, and Dr. Kaos were key components of the daily programming.

Remember DT64

Christoph Singelstein, Thomas Klug, Andreas Ulrich at DT64 | © Jörg Wagner



◆ The DT64 hit caravan was still touring Germany in 1991, having embarked on a mission to rescue the station after the fall of the Berlin Wall. A large, emotional wave of protests in the east and west brought people together and continues to do so to this day. In October 1991, superstar David Bowie came to Berlin to fight for the station – without success. The end of the station in mid-1993, with the renaming to Sputnik and the move to Halle, left behind an enormous empty space in the hearts of an entire generation.



New Kiez on the Block

VISION 1.0 – BLOCK-E

♦ Built in the early 1960s, the reinforced concrete structure is a classic. Imposing from afar and up close, the five-floor block is home to historical treasures. The raw concrete has been preserved, and with it the recent decades of graffiti, providing BLOCK-E with its genuine character.

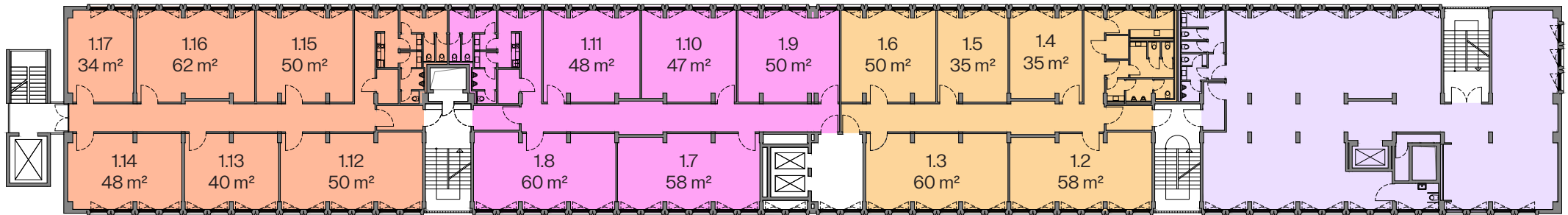
The enormous building forms the basis for a modern vibe in the unusually cool neighborhood. Combined with new materials, a glass facade, and a contemporary interior, the former department for news and foreign policy will be transformed into innovative Work Lofts.

FUNKY STUDIOS | 1st FLOOR

approx. 34 m²–60 m²



Ceiling height min. 3 m



B1.04

B1.03

B1.02

B1.01

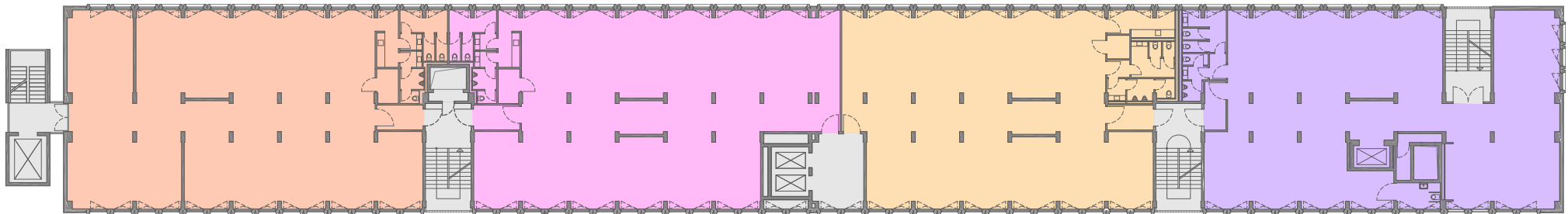


STANDARD FLOOR

approx. 1,632 m²



Ceiling height min. 3 m



B 3.04
ca. 439 m²

B 3.03
ca. 417 m²

B 3.02
ca. 378 m²

B 3.01
ca. 398 m²

SPLITTING OPTIONS

4 units per floor



3 units per floor



2 units per floor



2 units per floor



1 unit per floor





New Work in unusually cool surroundings

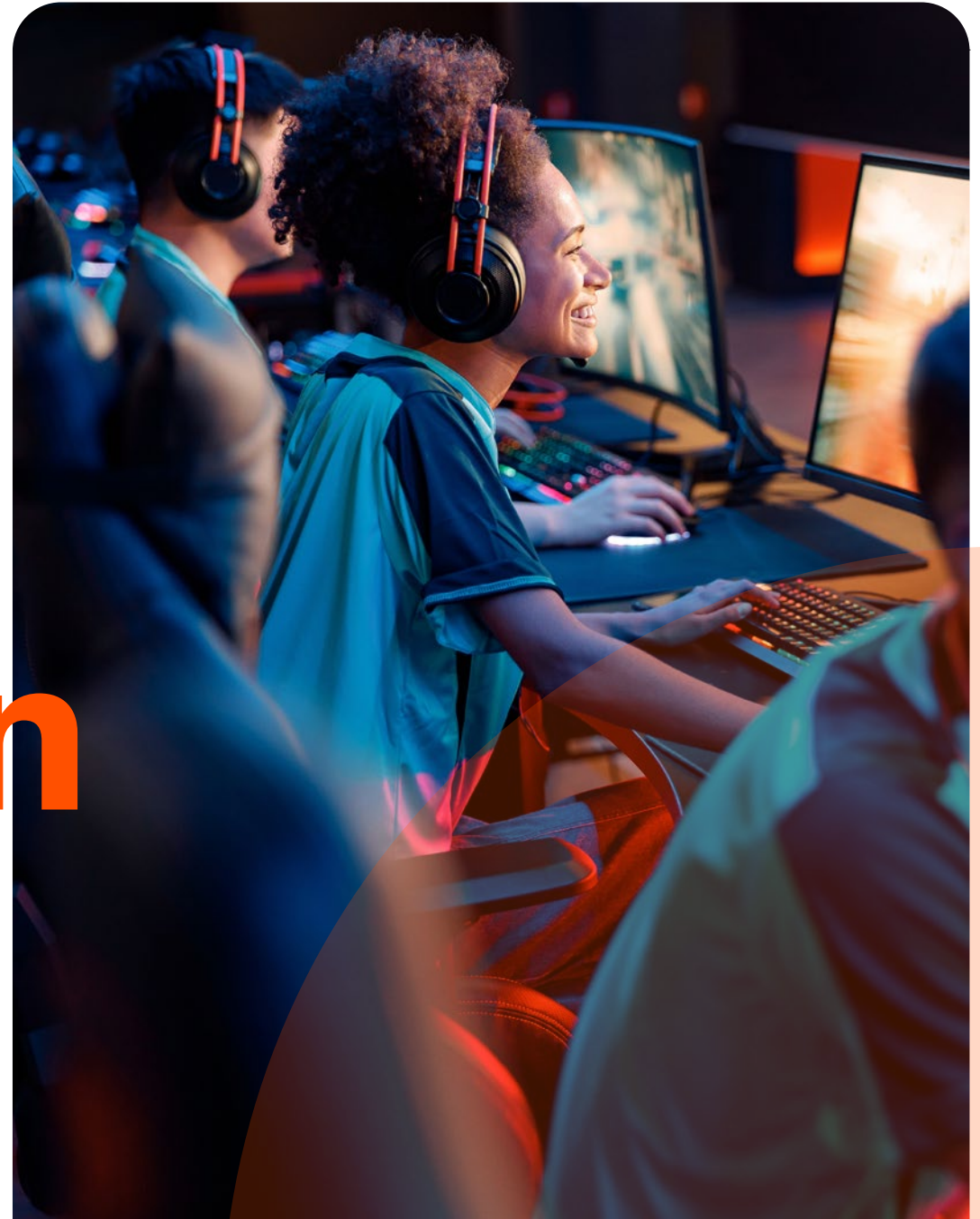
**IS IT POSSIBLE TO REIMAGINE A CLASSIC?
YES, BY TURNING IT INTO AN ICON.**

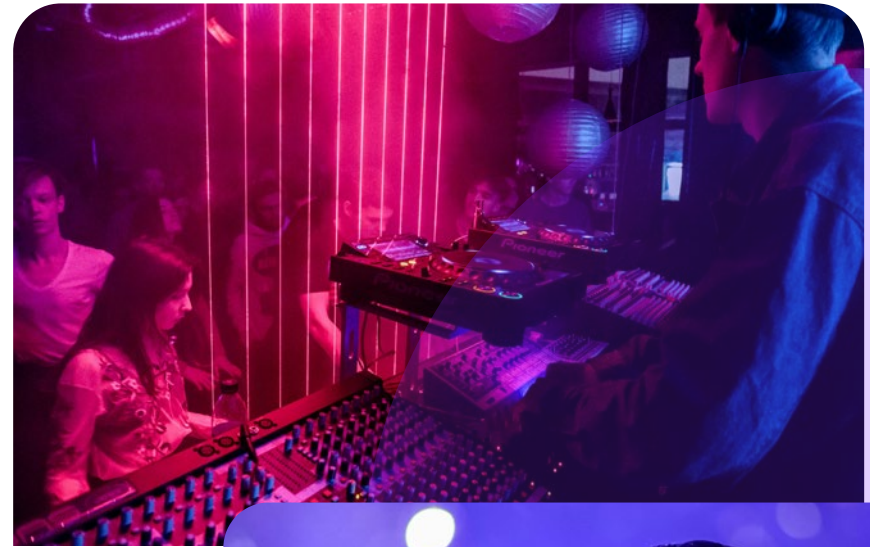


Station to Station

VISION 2.0 – STATIONS

♦ The eight modern STATIONS will be used for a variety of purposes: from culture, education, accommodation and social services to gastronomy, co-working and retail. The synergy between the existing building and innovation, BLOCK-E and the STATIONS, is dialog-oriented: Social hubs open to all sides are created in the outdoor areas.







Tomorrow Starts Today

◆ An international campus thrives on a colorful mix of people, ideas and places. This diversity is also reflected in the architectural concept: each STATION will be planned and individually designed by a different Berlin architectural firm according to the urban planning concept of KSP Engel Berlin.

KSP Engel will coordinate and design the central building of the eight stations. This allows for a creative mix, colorful ideas and funk in the city.



Your Next Episode!



Contact

Nurcan Sahin

Project Manager
+49 176 48085899
n.sahin@trockland.com

Luciana Amaral

Letting Manager
+49 1590 6782827
l.amaral@trockland.com



funkytown.berlin



TROCKLAND®

Trockland Management GmbH
Hauptstraße 27 | Aufgang E | 10827 Berlin
+49 30 2363137-0 | trockland.com

Trockland Disclaimer

This information does not purport to comprise a full description of the property for any kind of investment nor to include all information that could be of interest to potential investors for such a decision. This information does not replace the need for the recipient to examine the potential investment of the property. Neither does it represent an offer to invest in the property. Neither this document nor the information contained in this document may be used as a basis for contracts, obligations or similar.

No express or implied guarantees or undertakings are given for the correctness, completeness and up-to-datedness of the information, figures, assessments and projections in this document or in any other written or verbal information provided to the recipient. Trockland Management GmbH (including all Trockland companies owning real estate property) its managing directors, officers and employees do not accept any liability in this respect.

This information must be treated confidentially and must not at any time be copied, reproduced or forwarded to other parties (as a whole or in parts) without the prior written consent of Trockland Management GmbH. Neither Trockland Management GmbH nor the Trockland company owning the property shall be obliged to grant the recipient access to any further information, to update the information presented in this document or to correct information that proves to be incorrect during the course of the lease process.

Layouts, plans, views and features are based on information and data that may vary in the different planning stages. Visualizations are artistic illustrations that do not necessarily reflect the actual future setting. Potential investors are recommended to compile and evaluate their own information with regard to the properties and the investment which is the content of this presentation. It is recommended that every potential investor who is interested

in purchasing or valuing the investment and the properties should appoint their own financial advisors or other professional consultants.

Copyright of photos & renderings:
Trockland, Jörg Wagner, Adobe Stock, unsplash

Ein Projekt von
TROCKLAND®