



Funkytown BLOCK-E

**New Kiez on
the Block**

Innovative creative campus
surrounded by city and nature

A project by
TROCKLAND®

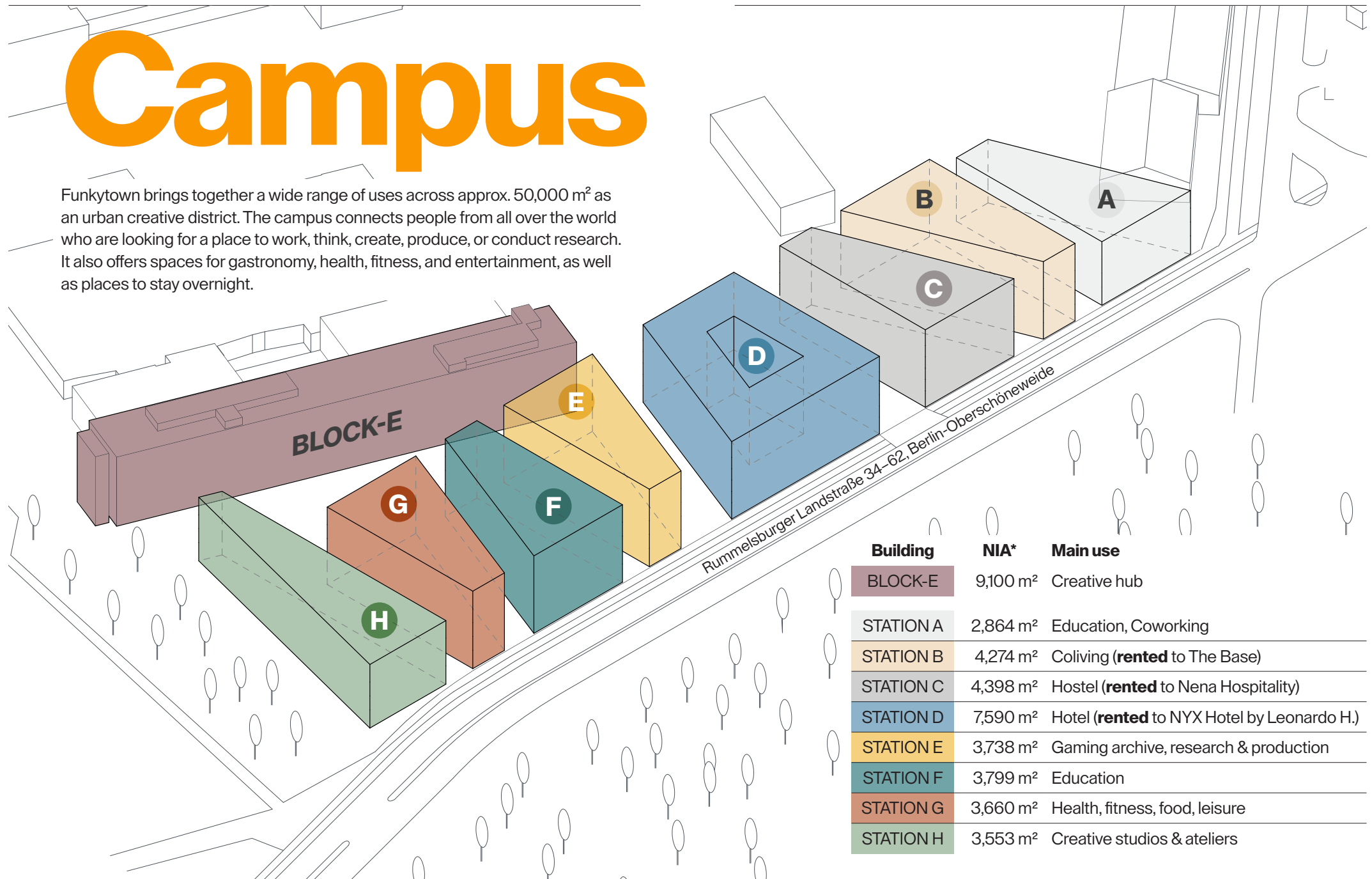


BLOCK-E: Ready for the next episode

♦ The new creative quarter, offering a view of the Spree River, Plänterwald, and of the neighboring Funkhaus in Nalepastrasse, as well as the city skyline, represents the revitalization of a legendary location: From the BLOCK-E on Rummelsburger Landstrasse the GDR youth radio station DT64, among others, broadcast culture and hits, debates and art into the households of an entire generation.

Campus

Funkytown brings together a wide range of uses across approx. 50,000 m² as an urban creative district. The campus connects people from all over the world who are looking for a place to work, think, create, produce, or conduct research. It also offers spaces for gastronomy, health, fitness, and entertainment, as well as places to stay overnight.



Building	NIA*	Main use
BLOCK-E	9,100 m ²	Creative hub
STATION A	2,864 m ²	Education, Coworking
STATION B	4,274 m ²	Coliving (rented to The Base)
STATION C	4,398 m ²	Hostel (rented to Nena Hospitality)
STATION D	7,590 m ²	Hotel (rented to NYX Hotel by Leonardo H.)
STATION E	3,738 m ²	Gaming archive, research & production
STATION F	3,799 m ²	Education
STATION G	3,660 m ²	Health, fitness, food, leisure
STATION H	3,553 m ²	Creative studios & ateliers

I Follow Rivers

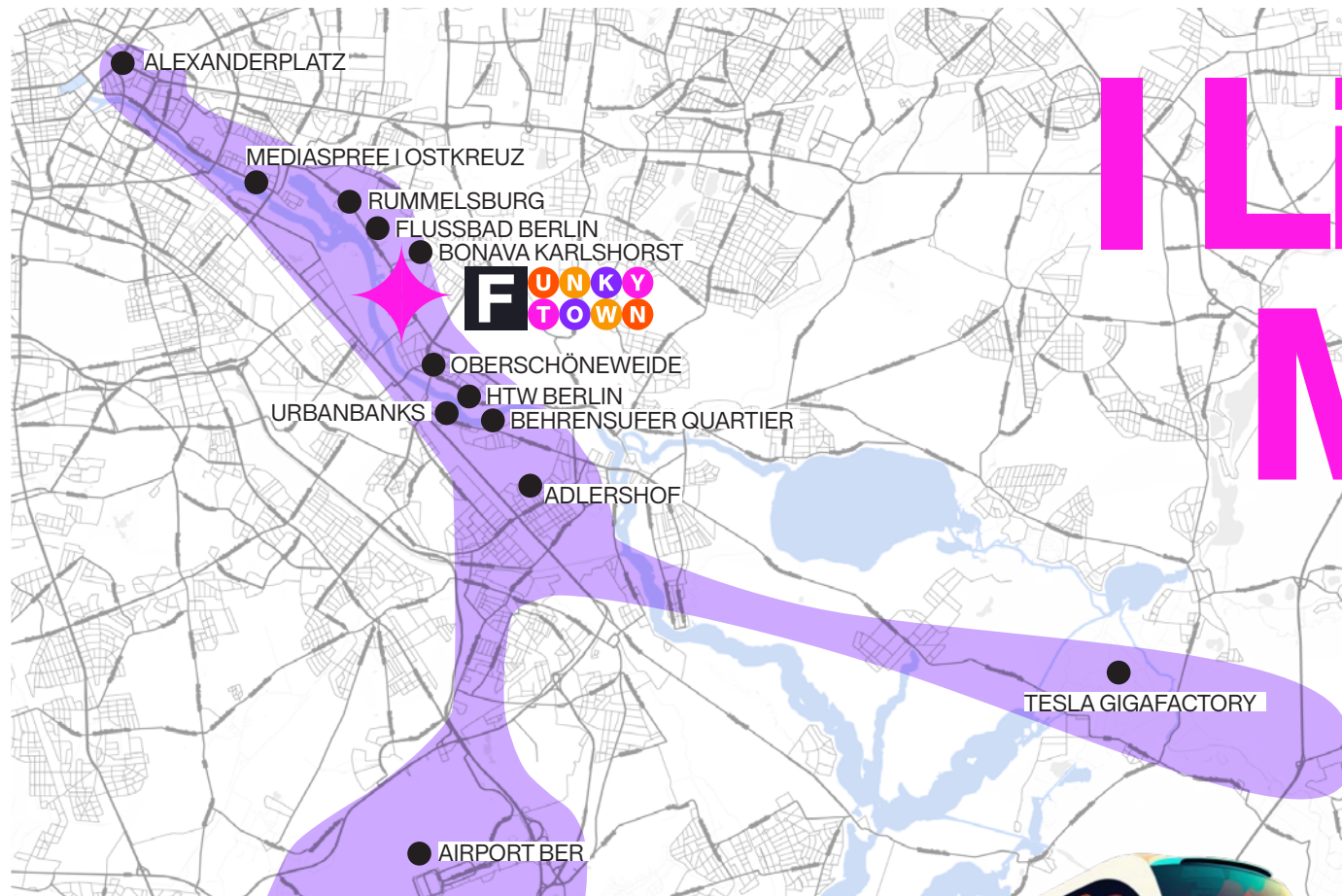
WHERE TOMORROW BEGINS

◆ Between the Spree, startup spirit, and a vibrant creative scene: Funkytown sits at the heart of Berlin's booming southeast corridor. Surrounded by Tesla, HTW, Adlershof, and the Spreeküste development, a new hotspot for innovation, culture, and bold ideas is taking shape.



Funkhaus Spree romance: magical mix for creative minds





I Like to Move It

BOOM CORRIDOR

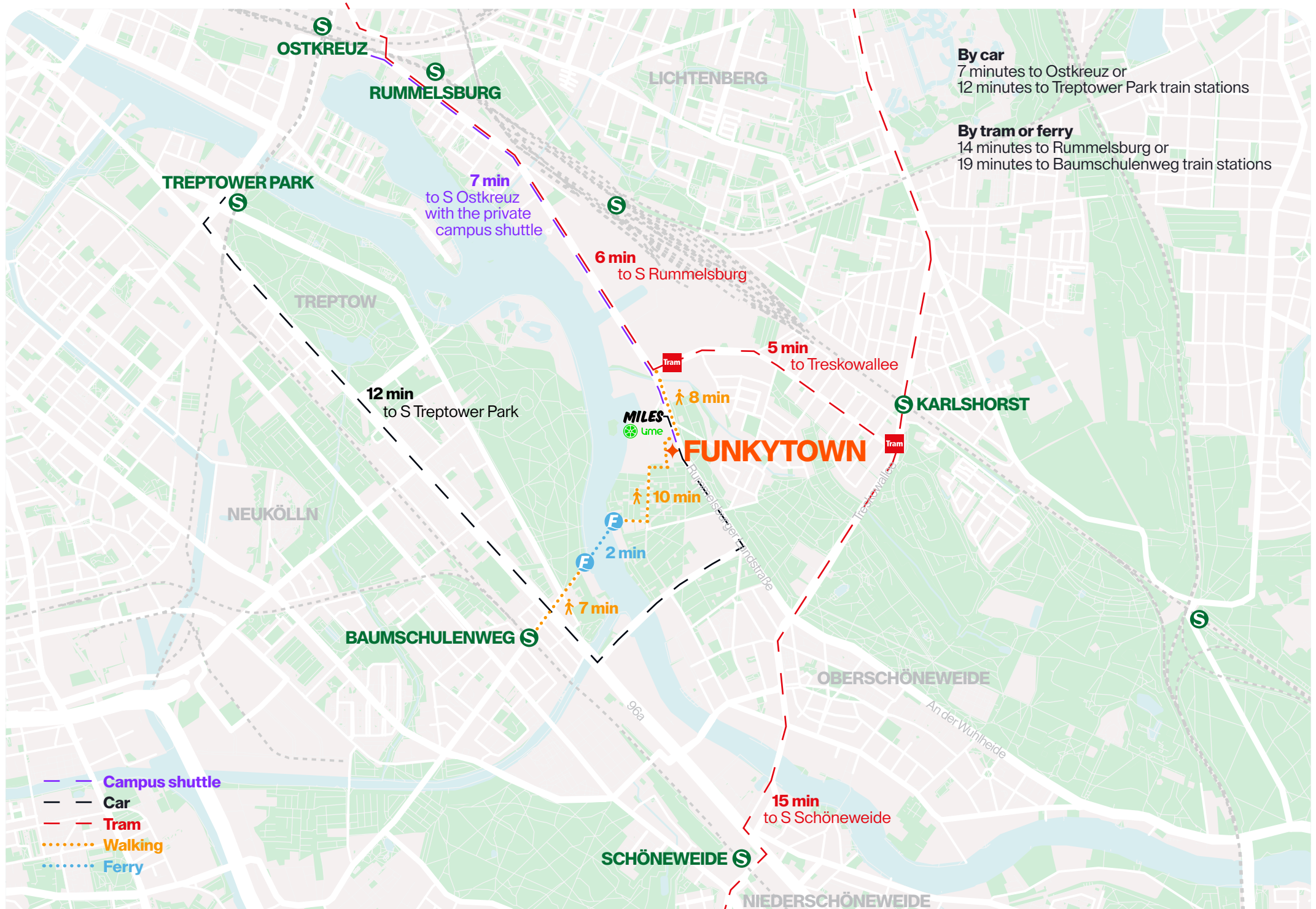
♦ The opening of Berlin's new international airport (BER) has shifted attention to the city's southeast – a region full of diverse potential. Nestled between Ostkreuz, Rummelsburg, and Adlershof, OSW – “Oh So Wonderful” Oberschöneweide lies right at the center of this emerging boom corridor.

Its strategic location near the University of Applied Sciences (HTW), the Adlershof Science and Technology Park, the Tesla Gigafactory, and the planned European Tesla Development Center is positioning the district as one of Berlin's key future hubs.

MOBILITY

♦ There will be a private campus shuttle for all tenants and guests, linking Funkytown to the Ostkreuz train station between 7:30 a.m. and 9 p.m. Numerous train and bus lines run from this public transport hubs throughout Berlin and into Brandenburg. It is also possible to travel to the quarter individually at any time using share cars, scooters or bikes.







Spree Coast

KEY

- Funkytown | Existing & New
- Funkhaus
- Future development

◆ The immediate neighborhood of Funkytown will undergo far-reaching changes in the coming years: As part of the cross-district “Spree Coast” development project, the importance of the areas along the banks of the Spree River between Rummelsburg and Oberschönevide, which are valuable in terms of urban development, has been recognized. The construction development of this approximately 30-hectare area is driven by the Lichtenberg district office, the Treptow-Köpenick district office and the Senate Department for Urban Development, Construction and Housing.



Depeche Mode concert at Funkhaus Nalepastraße
funkhaus-berlin.net



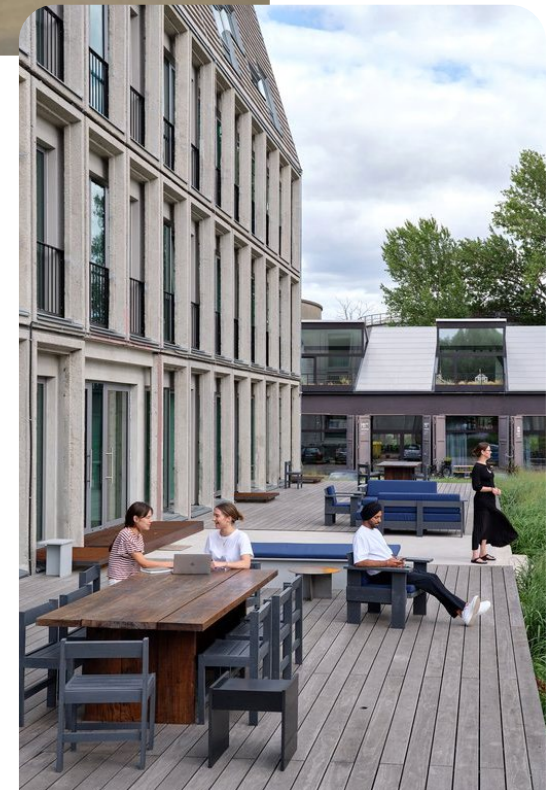
Exhibition at Reinbeckhallen, © Thorsten Wulff
stiftung-reinbeckhallen.de



Event Space g.ART.n at Gaswerksiedlung, © Anna Bresoli
gaswerk-music-days.de/gaswerksiedlung

THE FUTURE IS IN THE AIR

♦ There are neighborhoods whose development is particularly strongly influenced by creative minds and companies. The area around Funkytown has been undergoing such a transformation for several years: Funkhaus Berlin successfully attracts people from all over the world with its concerts and events. The Gaswerksiedlung has provided a home for numerous musicians, sound engineers, and artists since 2018. Stiftung Reinbeckhallen, founded in 2016, presents exhibitions of contemporary art, accompanied by a varied program. Since 2023, the Flussbad has been a place for culture and ideas with event and exhibition spaces, guest rooms, restaurants, and lofts for creative work.



Workspace at Flussbad, © Andreas Meichsner
flussbad.com

♦ The story of BLOCK-E is fascinating, starting in the 1960s when it was constructed as a way to make more space for broadcasting and production rooms for several East German radio stations. In May of 1964, the German Youth Rally broadcast continuously for 99 hours straight, securing its cult status and establishing itself as the voice of East Germany's youth overnight. What was later known as DT64 became a symbol of East German identification. The youth radio station referred to itself as the "Power of the Eastside" – and thus a movement was born. Until the wall came down, shows like Hitglobus, Mischmasch, and Dr. Kaos were key components of the daily programming.

Remember DT64

Christoph Singelstein, Thomas Klug, Andreas Ulrich at DT64 | © Jörg Wagner



♦ The DT64 hit caravan was still touring Germany in 1991, having embarked on a mission to rescue the station after the fall of the Berlin Wall. A large, emotional wave of protests in the east and west brought people together and continues to do so to this day. In October 1991, superstar David Bowie came to Berlin to fight for the station – without success. The end of the station in mid-1993, with the renaming to Sputnik and the move to Halle, left behind an enormous empty space in the hearts of an entire generation.

New Kiez on the Block



VISION 1.0 – BLOCK-E

♦ Built in the early 1960s, the reinforced concrete structure is a classic. Imposing from afar and up close, the five-floor block is home to historical treasures. The raw concrete has been preserved, and with it the recent decades of graffiti, providing BLOCK-E with its genuine character.

The enormous building forms the basis for a modern vibe in the unusually cool neighborhood. Combined with new materials, a glass facade, and a contemporary interior, the former department for news and foreign policy will be transformed into innovative spaces.

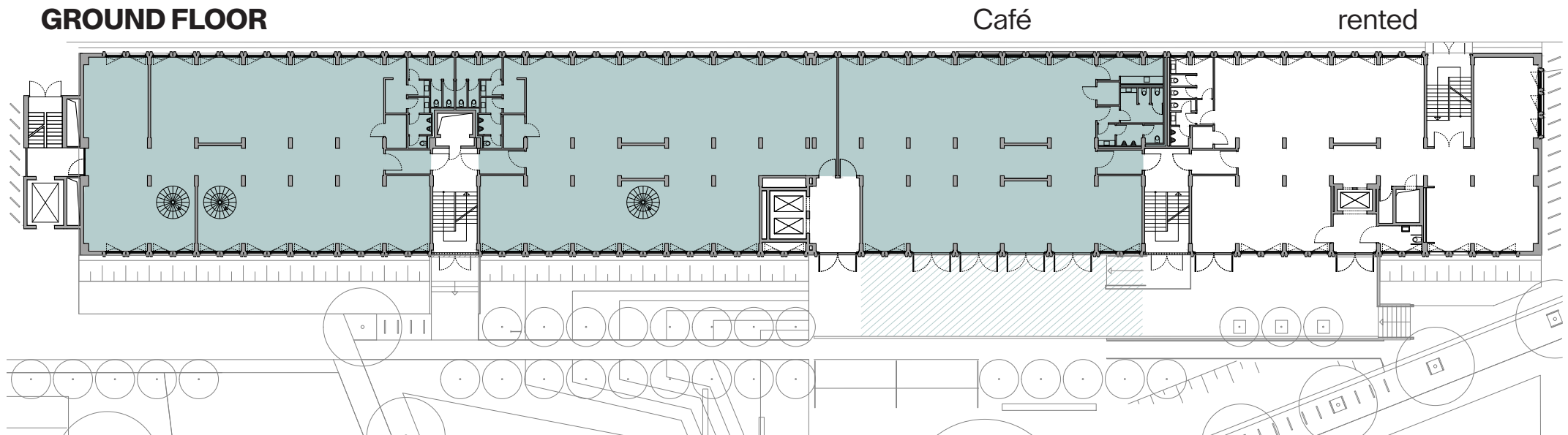
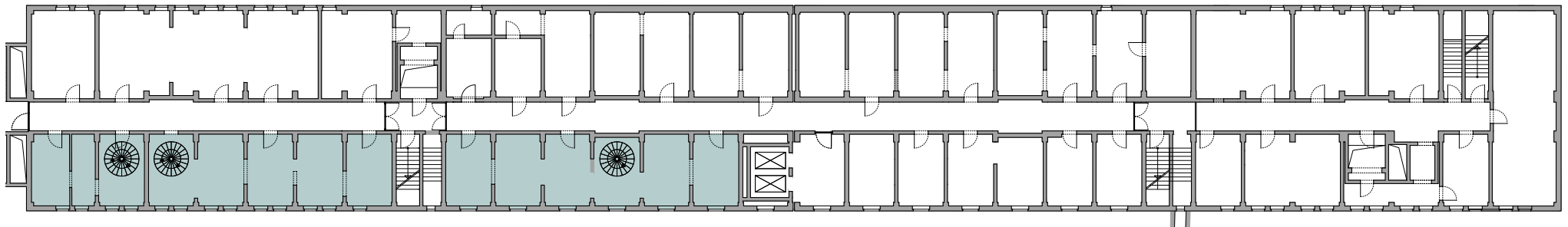
DIVERSE USES

Culinary, event, studio, gallery, coworking

approx. 1,567 m²



Ceiling height up to 3 m

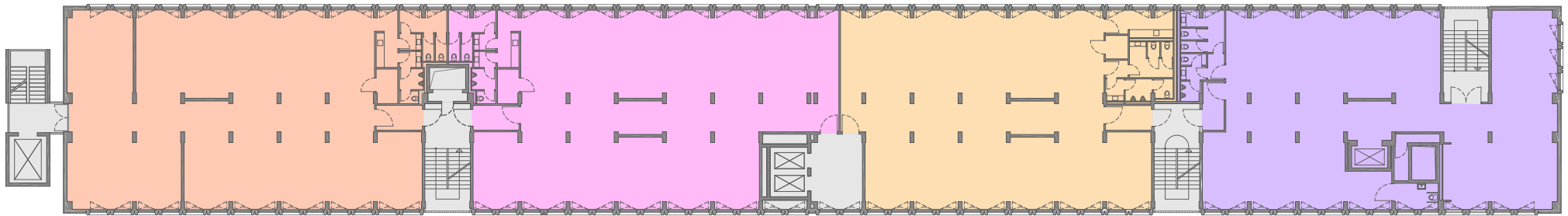
GROUND FLOOR**BASEMENT**



The ground floor of BLOCK-E offers plenty of space for various concepts

STANDARD FLOORapprox. 1,632 m²

Ceiling height up to 3 m

**B 3.04**
ca. 439 m²**B 3.03**
ca. 417 m²**B 3.02**
ca. 378 m²**B 3.01**
ca. 398 m²**SPLITTING OPTIONS**

4 units per floor



3 units per floor



2 units per floor



2 units per floor



1 unit per floor





BLOCK-E in the future: New Work in unusually cool surroundings

IS IT POSSIBLE TO REIMAGINE A CLASSIC?
YES, BY TURNING IT INTO AN ICON.





The architects and the planning team

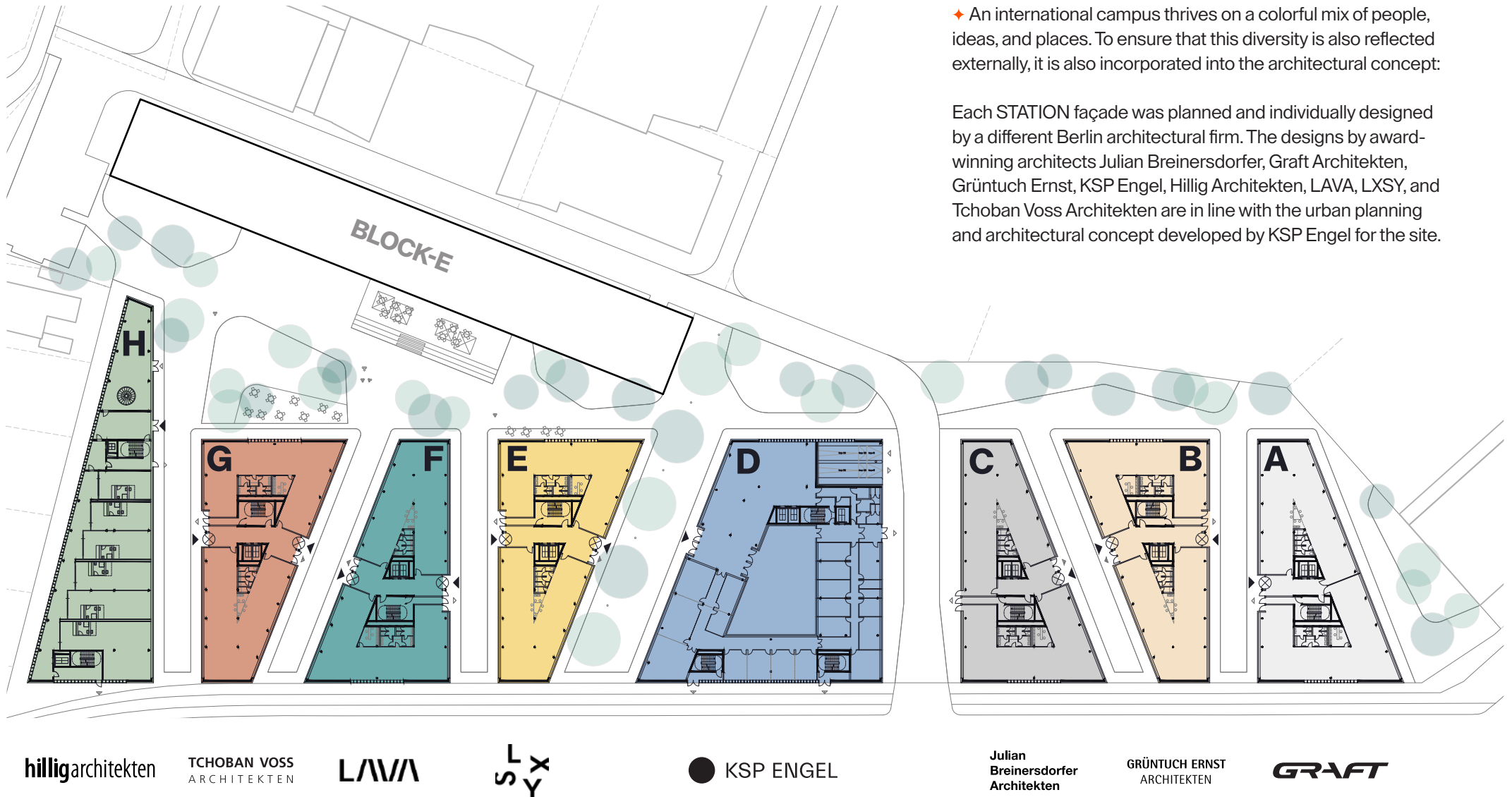
Station to Station

♦ The eight modern STATIONS will be used for a variety of purposes: from culture, education, accommodation and social services to gastronomy, co-working and retail. The synergy between the existing building and innovation, BLOCK-E and the STATIONS, is dialog-oriented: Social hubs open to all sides are created in the outdoor areas.

UNITED ARCHITECTS

♦ An international campus thrives on a colorful mix of people, ideas, and places. To ensure that this diversity is also reflected externally, it is also incorporated into the architectural concept:

Each STATION façade was planned and individually designed by a different Berlin architectural firm. The designs by award-winning architects Julian Breinersdorfer, Graft Architekten, Grüntuch Ernst, KSP Engel, Hillig Architekten, LAVA, LXSY, and Tchoban Voss Architekten are in line with the urban planning and architectural concept developed by KSP Engel for the site.



United architects

This selection of visionary Berlin architects offers a unique combination of creativity, foresight and experience as well as empathy, enthusiasm and love. Funkytown is an unprecedented collective contribution to Berlin's urban development.



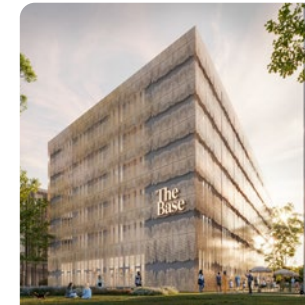
BLOCK-E:
AIP PLANUNGS GMBH

The architects at AIP are taking on the challenging task of redesigning the existing BLOCK-E building.



STATION A:
DESIGN STUDY BY
GRAFT ARCHITEKTEN

The Station opens up Funkytown to the northeast. A place of connections — in every direction: to the city, the Spree River, and the historic Funkhaus.



STATION B:
DESIGN STUDY BY
GRÜNTUCH ERNST ARCHITEKTEN

Inspired by James Brown's legendary song "Funky Drummer": a play of connection, retreat, and openness.



STATION C:
DESIGN STUDY BY
JULIAN BREINERSDORFER ARCHITEKTEN

An interpretation of GDR architecture in a modern, gentler form with a retro character.



STATION D:
DESIGN STUDY BY
KSP ENGEL

Sculptural elegance for the entire campus, as well as a tribute to the architectural heritage of the site and its new surroundings.



STATION E:
DESIGN STUDY BY
LXSY

Marking the entrance to the campus plaza, the façade drapes like an elegant gown. It combines industrial coolness, joyful urban energy, and a spirit of sustainability.



STATION F:
DESIGN STUDY BY
LAVA

New potentials for light, landscape, and life are being unlocked to enhance everyday urban living.



STATION G:
DESIGN STUDY BY
TCHOBAN VOSS

By combining striking form, sustainable materials, and a unifying function, this STATION becomes a cornerstone of Funkytown's identity.



STATION H:
DESIGN STUDY BY
HILLIGARCHITEKTEN

A poetic homage to industrial heritage and nature — guiding toward a sustainable future.

Your Next Episode!





Viola Molzen

Letting & Project Sales Manager
v.molzen@trockland.com
+49 173 2582132

Contact

**CREATING
UNIQUE
SPACES
WITH LOVE**



funkytown.berlin

A Project by

TROCKLAND®

Trockland Management GmbH
Hauptstraße 27 | Aufgang E | 10827 Berlin
+49 30 2363137-0 | trockland.com

Trockland Disclaimer

This information does not purport to comprise a full description of the property for any kind of investment nor to include all information that could be of interest to potential investors for such a decision. This information does not replace the need for the recipient to examine the potential investment of the property. Neither does it represent an offer to invest in the property. Neither this document nor the information contained in this document may be used as a basis for contracts, obligations or similar.

No express or implied guarantees or undertakings are given for the correctness, completeness and up-to-datedness of the information, figures, assessments and projections in this document or in any other written or verbal information provided to the recipient. Trockland Management GmbH (including all Trockland companies owning real estate property) its managing directors, officers and employees do not accept any liability in this respect.

This information must be treated confidentially and must not at any time be copied, reproduced or forwarded to other parties (as a whole or in parts) without the prior written consent of Trockland Management GmbH. Neither Trockland Management GmbH nor the Trockland company owning the property shall be obliged to grant the recipient access to any further information, to update the information presented in this document or to correct information that proves to be incorrect during the course of the lease process.

Layouts, plans, views and features are based on information and data that may vary in the different planning stages. Visualizations are artistic illustrations that do not necessarily reflect the actual future setting. Potential investors are recommended to compile and evaluate their own information with regard to the properties and the investment which is the content of this presentation. It is recommended that every potential investor who is interested

in purchasing or valuing the investment and the properties should appoint their own financial advisors or other professional consultants.

Copyright of photos & renderings:

Trockland, Jörg Wagner, Adobe Stock, unsplash

A Project by

TROCKLAND®